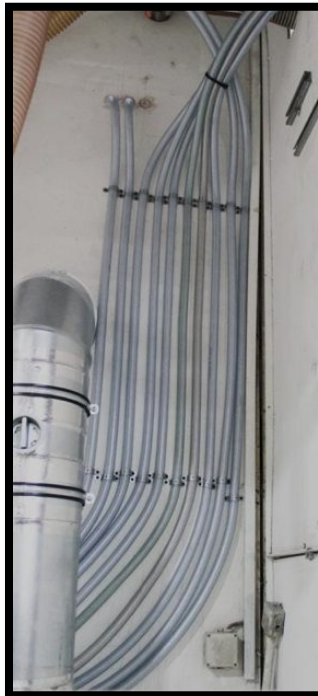


# CASE STUDY

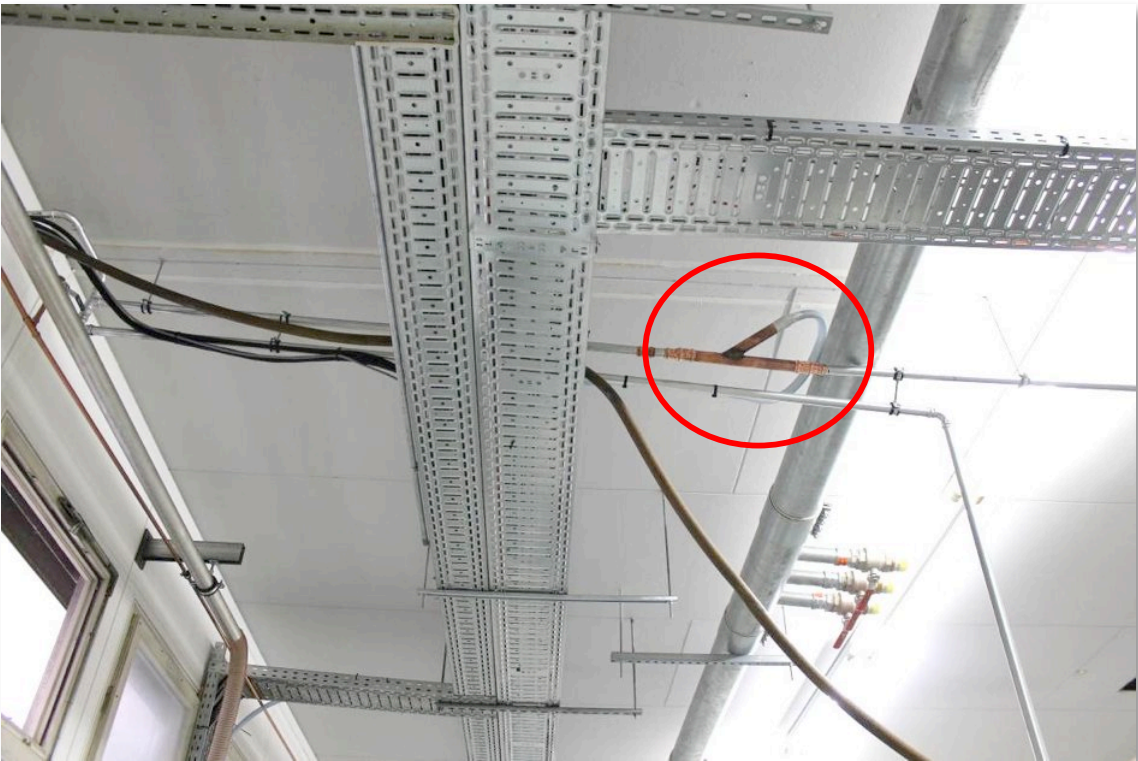
Site description	Plastic producer
Treatment location	Extraction chimney, Hall, outside of the building
Location description	<ul style="list-style-type: none"> <li>- 3 extraction chimneys: 50.000m<sup>3</sup>/H, 25.000m<sup>3</sup>/h, 18.000m<sup>3</sup>/h</li> <li>- Three ducts directly in the manufacturing process (machine)</li> <li>- Mixing plastics zone with access to the outside air</li> <li>- Total length of network: 1100m</li> <li>- Duration of treatment: 24 hours per day, 7 days / 7</li> </ul>
Characteristic smells	Plastic, PVC (polystyrene, acrylic nitriles, Butadiene, Styrene and PolyEthylene)
Active agent used	105 Gelactiv <sup>®</sup> Plates: → 51 % Gelactiv <sup>®</sup> AFG → 25 % Gelactiv <sup>®</sup> B3 → 13 % Gelactiv <sup>®</sup> C → 11 % Gel-O-Dor <sup>®</sup> 82
Diffusion technology applied	1 Smellmeister <sup>®</sup> G180 with 12 compressors
Treatment renewal rate	25 plates per month (25%)

**Note:** Until now, the treatment in place, charcoal and particulate filter was inadequate. The exhaust air contains particles and oil, which greatly reduces the life of the carbon filter. The odor concentration could not be eliminated.

Installation of the Smellmeister<sup>®</sup> G180 device, inside the building with fresh air from the outside. The fresh air supplied tube is equipped with an automatic valve which external temperature negative toggles on the air from the Hall.



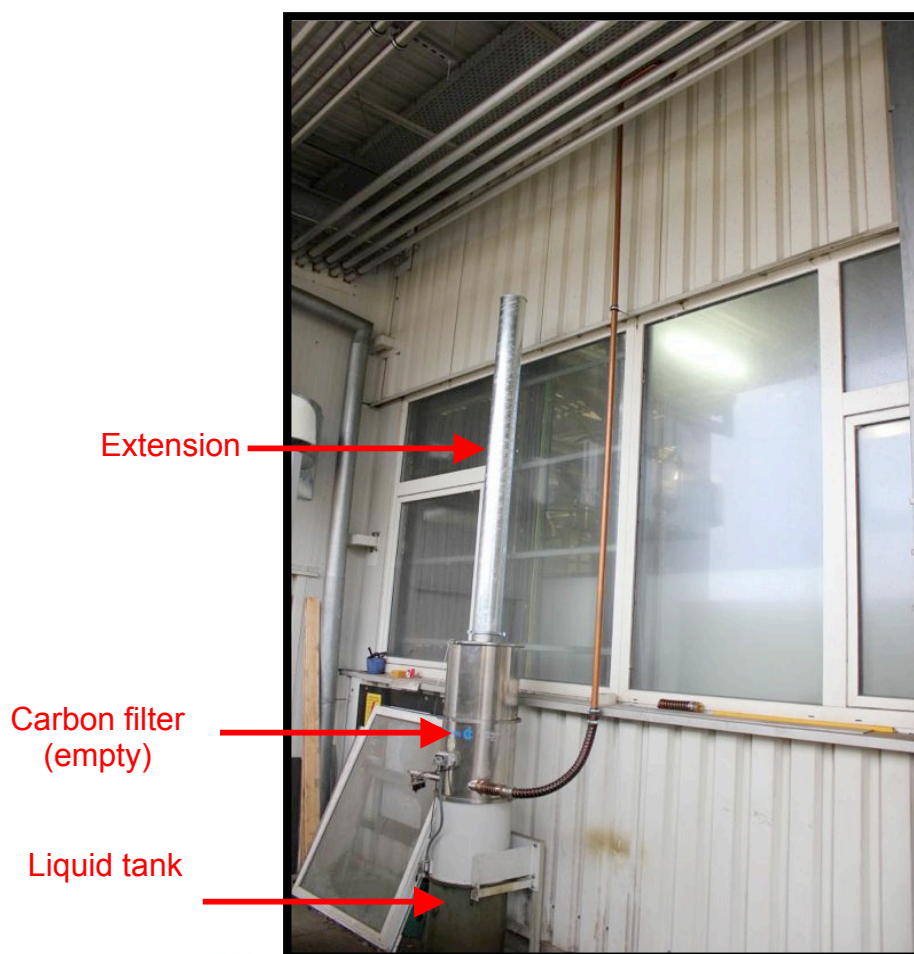
Connecting from air duct to 3 pipes to treated:







An extension is placed at the outlet of the vacuum carbon filter, to ensure sufficient contact time for the treatment action.



Extension

Carbon filter  
(empty)

Liquid tank

**Cheminey's treatment 1: 18.000m<sup>2</sup> /h :**



**Cheminey's treatment 2: 25.000m<sup>2</sup>/h:**

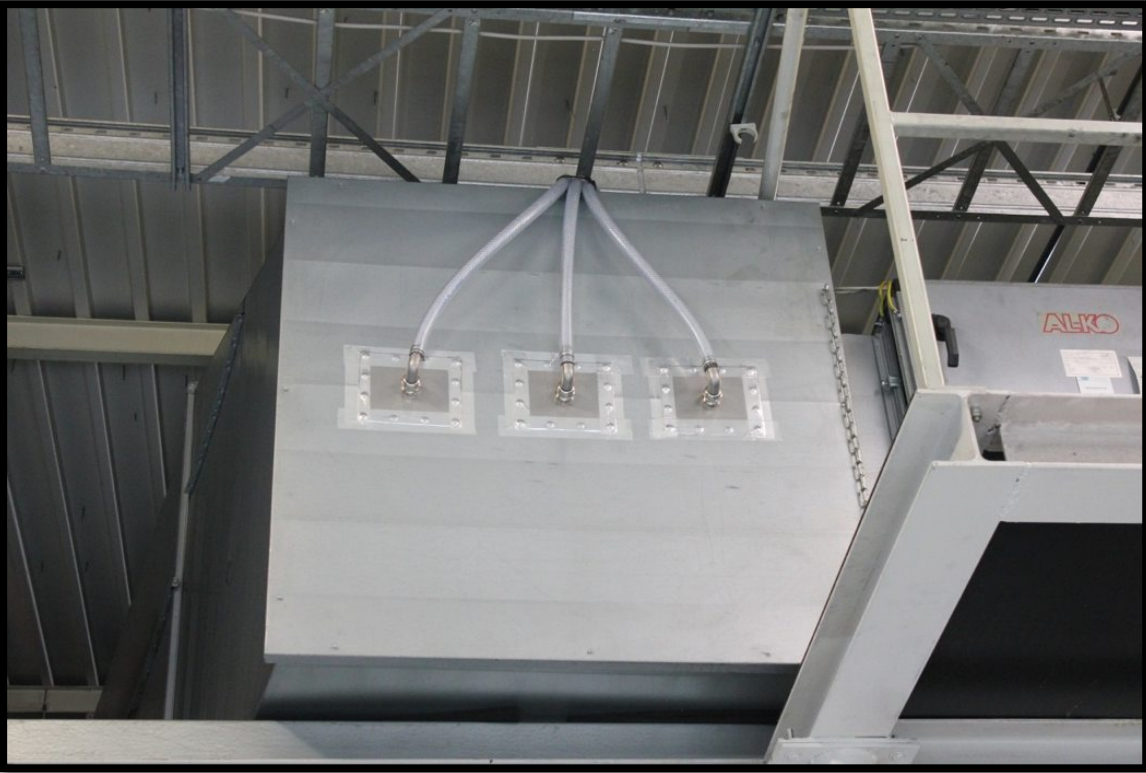




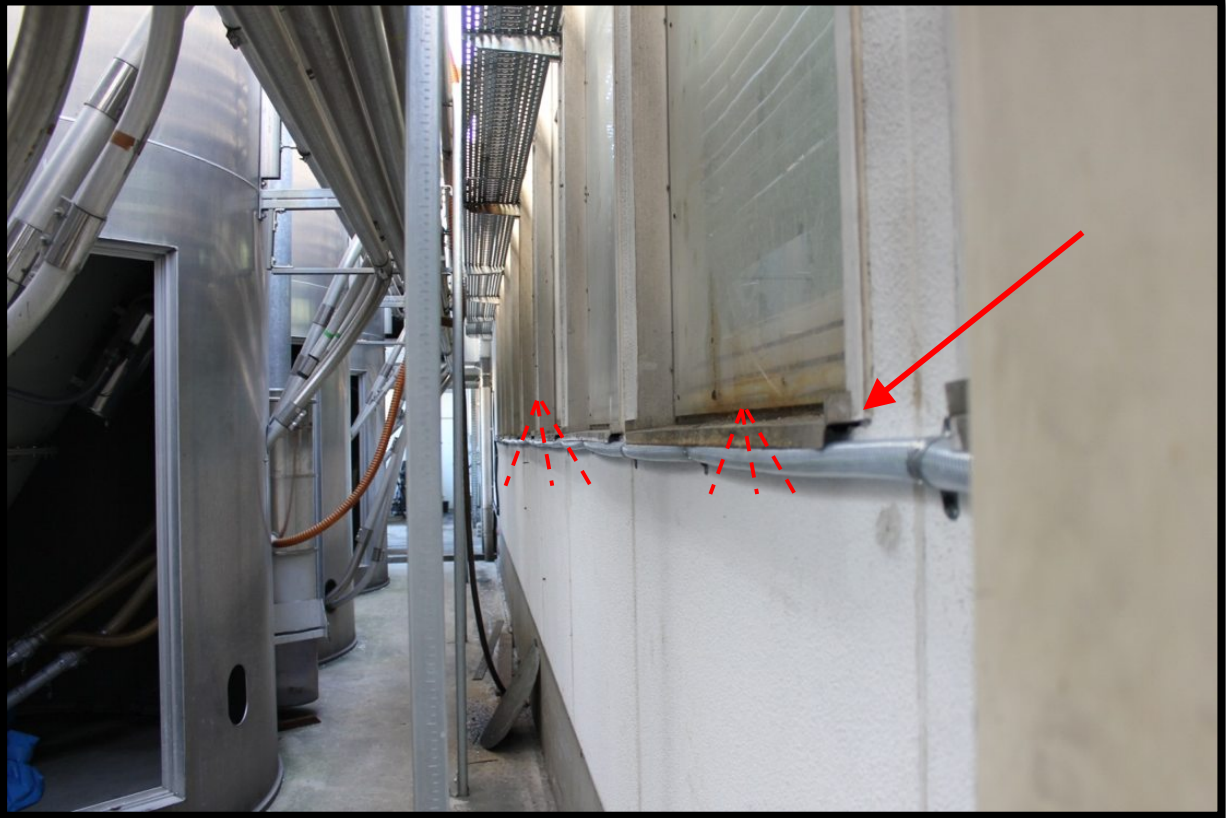
Cheminey's treatment 3:50.000m<sup>2</sup>/h:



Injection point farthest after the output filter systems:



Treatment of the outside wall (diffusion around windows and doors):







Processing hall (mixer):



**Smellmeister G180:**



<b>Power:</b>	<b>12 compressors (3300l/min)</b>
<b>Plate capacity :</b>	<b>until 180 Gelactiv<sup>®</sup> plates</b>
<b>Electrical characteristic:</b>	<b>400V / 16A</b>
<b>Treatment capacity:</b>	<b>de 300.000m<sup>3</sup>/h (depending on OU)</b>
<b>Operating system:</b>	<b>Flow path of the air in cascade, for charging the air with Biothys' molecules.</b>
	<b>1-Room system</b>
<b>Dimension:</b>	<b>200 x 1780 x 1050</b>
<b>Weight (without plates):</b>	<b>780 kg</b>